

**ROLLUX**<sup>®</sup>  
CORTINAS • TOLDOS • PERSIANAS



CATÁLOGO SCREEN  
2017



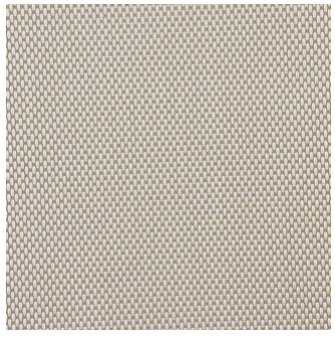
# SUN CONTROL 1%

Openness Factor	1%
Weave	Basketweave 2 x 2
Composition	30% Polyester, 70% PVC
Fabric Weight	480 gr / m <sup>2</sup>
Fabric Thickness	(+/-) 0.68 mm
Breaking Strength (ISO 1421)	Warp 192 daN / 5 cm, weft 198 daN / 5 cm
Tearing Strength (ISO 4674)	>= 8 daN warp, >= 7 daN weft
UV Blockage	Approximately 99%
Color Fastness (ISO 105: B02)	Grade 8 (scale 1 - 8)
Fire Classification	B1 DIN 4102, NFPA 701
Bacterial & Fungi Resistace	BS EN ISO 846 (UK) US ASTM G21 (Fungi) US ASTM G22 (Bacteria)

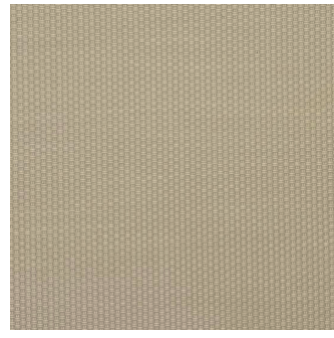
**ROLLUX**



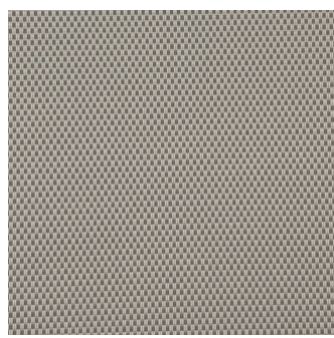
**SUN CONTROL 1% WHITE**



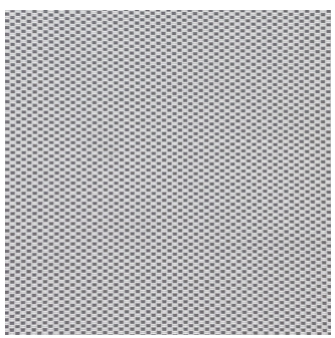
**SUN CONTROL 1% WHITE LINEN**



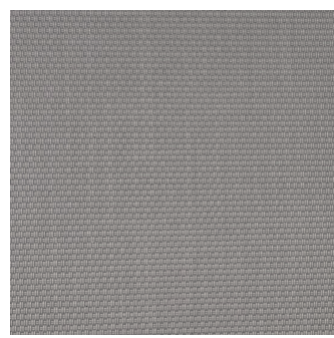
**SUN CONTROL 1% LINEN**



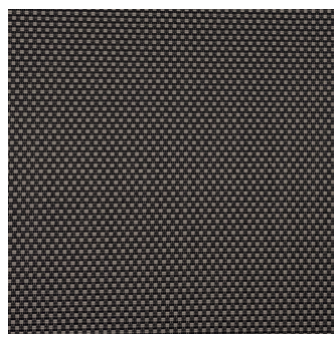
**SUN CONTROL 1% PEARL GREY**



**SUN CONTROL 1% WHITE PEARL**



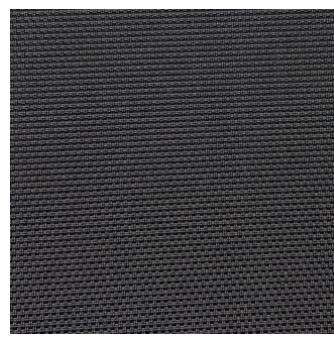
**SUN CONTROL 1% SOFT GREY**



**SUN CONTROL 1% ASH**



**SUN CONTROL 1% TOBACCO**



**SUN CONTROL 1% EBONY**

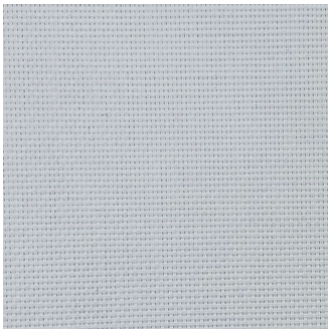
# SUN CONTROL 3%

## SUN CONTROL 3%

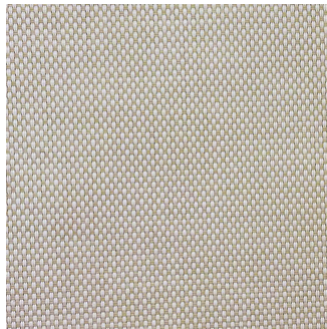
Openness Factor	3%
Weave	Basketweave 2 x 2
Composition	30% Polyester, 70% PVC
Fabric Weight	470 gr / m <sup>2</sup>
Fabric Thickness	(+/-) 0.58 mm
Breaking Strength (ISO 1421)	Warp 180 daN / 5 cm, weft 178 daN / 5 cm
Tearing Strength (ISO 4674)	>= 8 daN warp, >= 7 daN weft
UV Blockage	Approximately 97%
Color Fastness (ISO 105. B02)	Grade 8 (scale 1 - 8)
Fire Classification	B1 DIN 4102, NFPA 701
Bacterial & Fungi Resistace	BS EN ISO 846 (UK) US ASTM G21 (Fungi) US ASTM G22 (Bacteria)

ROLLUX®

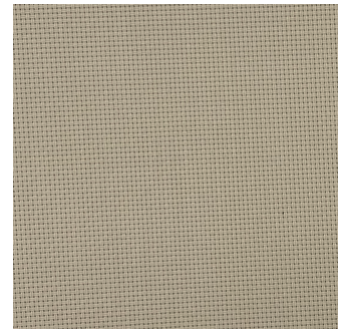
ROLLUX®



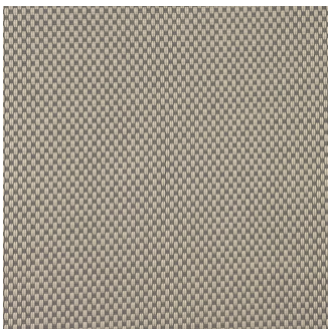
SUN CONTROL 3% WHITE



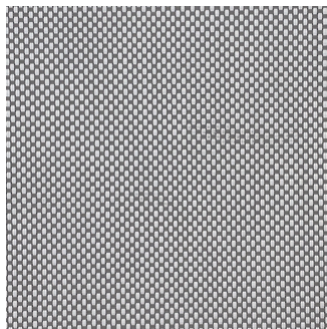
SUN CONTROL 3% WHITE LINEN



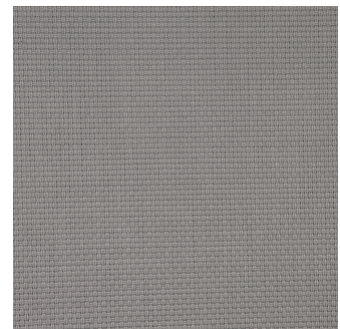
SUN CONTROL 3% LINEN



SUN CONTROL 3% PEARL GREY



SUN CONTROL 3% WHITE PEARL



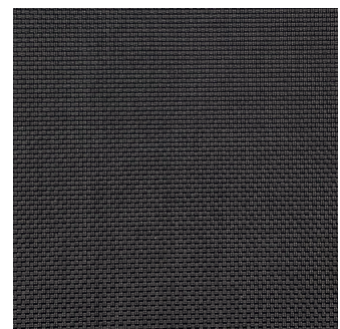
SUN CONTROL 3% SOFT GREY



SUN CONTROL 3% ASH



SUN CONTROL 3% TOBACCO



SUN CONTROL 3% EBONY

# SUN CONTROL 5%

ROLLUX

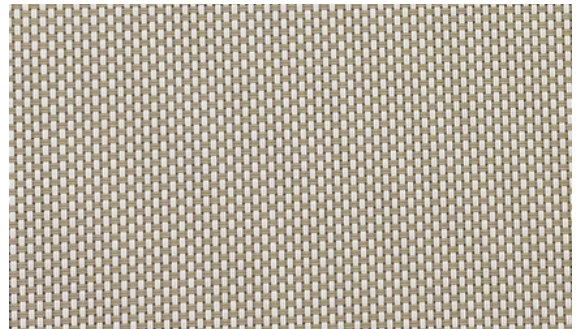
## SUN CONTROL 5%

Openness Factor	5%
Weave	Basketweave 2 x 2
Composition	30% Polyester, 70% PVC
Fabric Weight	410 gr / m <sup>2</sup>
Fabric Thickness	(+-) 0.55 mm
Breaking Strength (ISO 1421)	Warp 172 daN / 5 cm, weft 175 daN / 5 cm
Tearing Strength (ISO 4674)	>= 7 daN warp, >= 6 daN weft
UV Blockage	Approximately 95%
Color Fastness (ISO 105: B02)	Grade 8 (scale 1 - 8)
Fire Classification	B1 DIN 4102, NFPA 701
Bacterial & Fungi Resistace	BS EN ISO 846 (UK) US ASTM G21 (Fungi) US ASTM G22 (Bacteria)

ROLLUX



**SUN CONTROL 5% WHITE**



**SUN CONTROL 5% WHITE LINEN**



**SUN CONTROL 5% WHITE PEARL**



**SUN CONTROL 5% ASH**



**SUN CONTROL 5% TOBACCO**



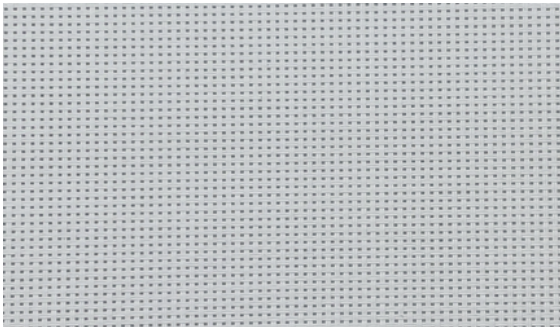
**SUN CONTROL 5% EBONY**



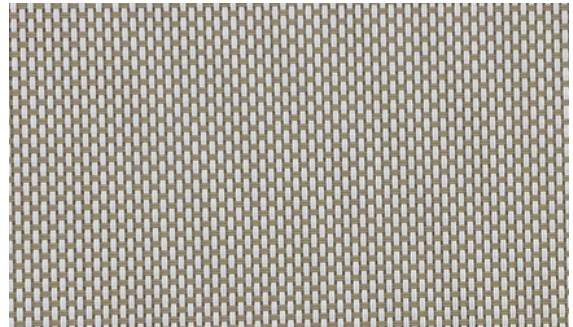
# SUN CONTROL 10%

Openness Factor	10%
Weave	Basketweave 2 x 2
Composition	30% Polyester, 70% PVC
Fabric Weight	340 gr / m <sup>2</sup>
Fabric Thickness	(+-) 0.55 mm
Breaking Strength (ISO 1421)	Warp 157 daN / 5 cm, weft 135 daN / 5 cm
Tearing Strength (ISO 4674)	>= 7 daN warp, >= 6 daN weft
UV Blockage	Approximately 90%
Color Fastness (ISO 105: B02)	Grade 8 (scale 1 - 8)
Fire Classification	B1 DIN 4102, NFPA 701
Bacterial & Fungi Resistace	BS EN ISO 846 (UK) US ASTM G21 (Fungi) US ASTM G22 (Bacteria)

ROLLUX



**SUN CONTROL 10% WHITE**



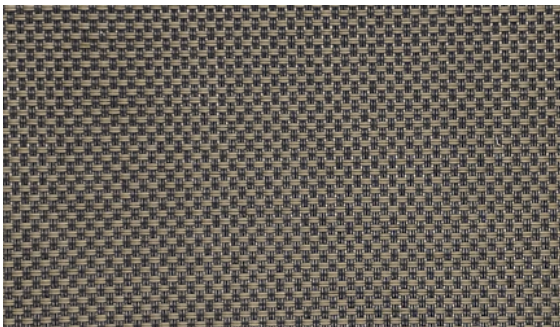
**SUN CONTROL 10% WHITE LINEN**



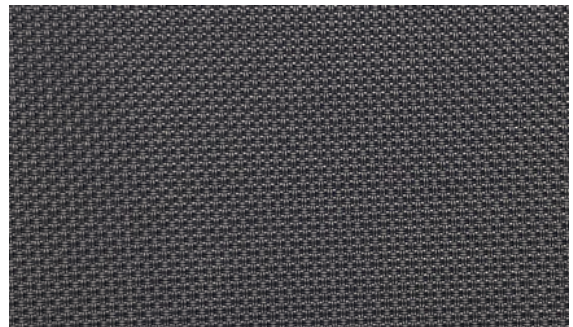
**SUN CONTROL 10% WHITE PEARL**



**SUN CONTROL 10% ASH**



**SUN CONTROL 10% TOBACCO**



**SUN CONTROL 10% EBONY**

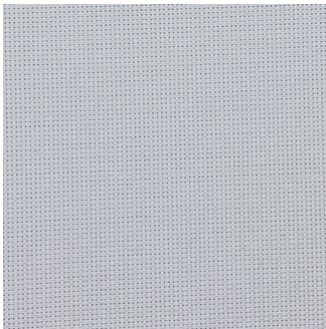
# BEST 330

ROLLUX

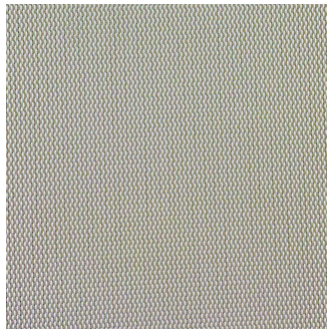
## BEST 330

Openness Factor	3%
Weave	1 x 2 construction
Composition	30% Polyester, 70% PVC
Fabric Weight	420 gr / m <sup>2</sup>
Fabric Thickness	(+/-) 0.60 mm
Breaking Strength (ISO 1421)	Warp 170 daN / 5 cm, weft 170 daN / 5 cm
Tearing Strength (ISO 4674)	>= 6 daN warp, >= 5 daN weft
UV Blockage	Approximately 97%
Color Fastness (ISO 105: B02)	Grade 8 (scale 1 - 8)
Fire Classification	B1 DIN 4102, NFPA 701
Bacterial & Fungi Resistace	BS EN ISO 846 (UK) US ASTM G21 (Fungi) US ASTM G22 (Bacteria)

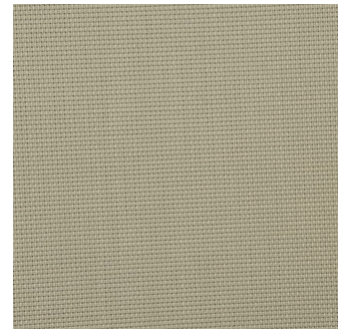
ROLLUX



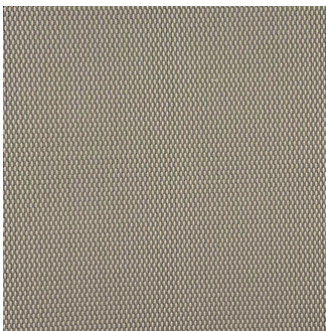
**BEST 330 WHITE**



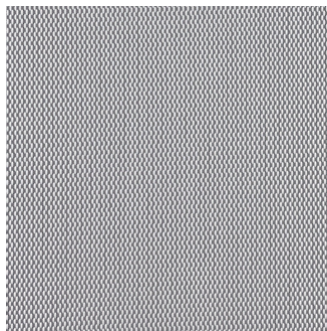
**BEST 330 WHITE LINEN**



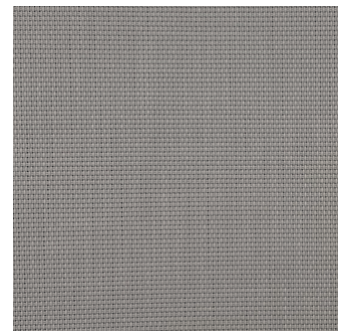
**BEST 330 LINEN**



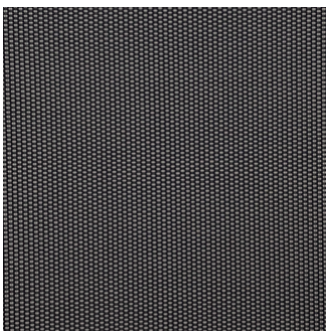
**BEST 330 PEARL GREY**



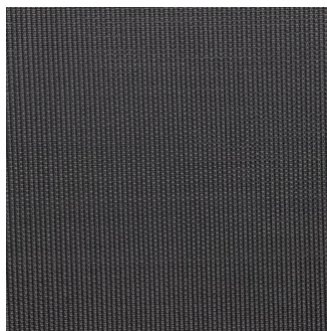
**BEST 330 WHITE PEARL**



**BEST 330 SOFT GREY**



**BEST 330 ASH**



**BEST 330 EBONY**

# METAL SCREEN

ROLLUX

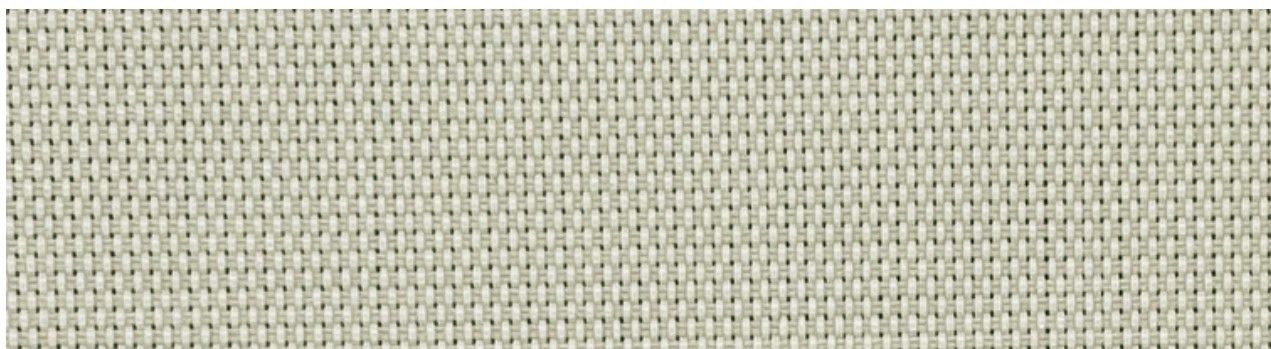
## METAL SCREEN

Openness Factor	3%
Weave	1 x 2 Construction
Composition	30% Polyester, 70% PVC
Fabric Weight	420 gr / m <sup>2</sup>
Fabric Thickness	(±) 0.60 mm
Breaking Strength (ISO 1421)	Warp 170 daN / 5 cm, weft 170 daN / 5 cm
Tearing Strength (ISO 4674)	>= 6 daN warp, >= 5 daN weft
UV Blockage	Approximately 97%
Color Fastness (ISO 105: B02)	Grade 8 (scale 1 - 8)
Fire Classification	B1 DIN 4102, NFPA 701
Bacterial & Fungi Resistance	BS EN ISO 846 (UK) US ASTM G21 (Fungi) US ASTM G22 (Bacteria)

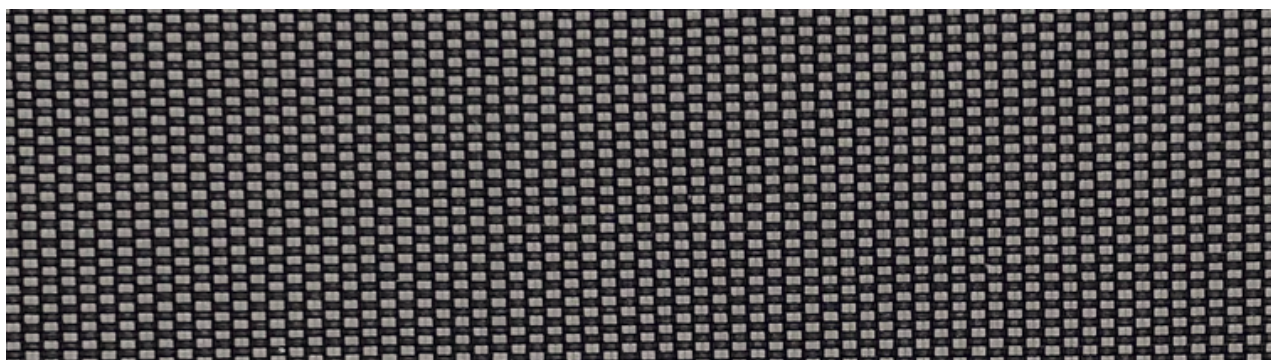
ROLLUX



**METAL SCREEN WHITE LINEN**



**METAL SCREEN WHITE PEARL**



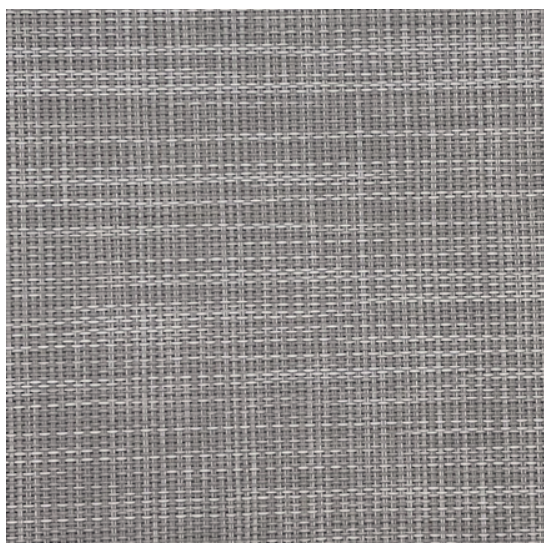
**METAL SCREEN ASH**

# SCREEN DECO

## SCREEN DECO

ROLLUX®

ROLLUX®



**SCREEN LINEN LIGHT GREY**



**SCREEN LINEN DARK GREY**



**SCREEN NATURAL AMBER**



**SCREEN NATURAL COAL**



# SCREEN DUAL 1%

ROLLUX®

## SCREEN DUAL 1%

Openness Factor	1%
Weave	1 x 2 construction
Composition	30% Polyester, 70% PVC
Fabric Weight	450gr/m <sup>2</sup>
Fabric Thickness	(+-) 0.63mm
Breaking Strength (ISO 1421)	warp >= 1700, weft >= 1250
UV Blockage	approximately 99%
Color Fastness (ISO 105: B02)	grade 8 (scale 1 - 8)
Fire Classification	NFPA 701-2004 TM#1, California Administrative code, Title 19, BS5867 Part2 Type B
Bacterial & Fungi Resistace	ASTM G21
Lead Free	16 CFR 1303 (USA)

ROLLUX®



**DUAL 1% LIGHT GREY**



**DUAL 1% ASH**



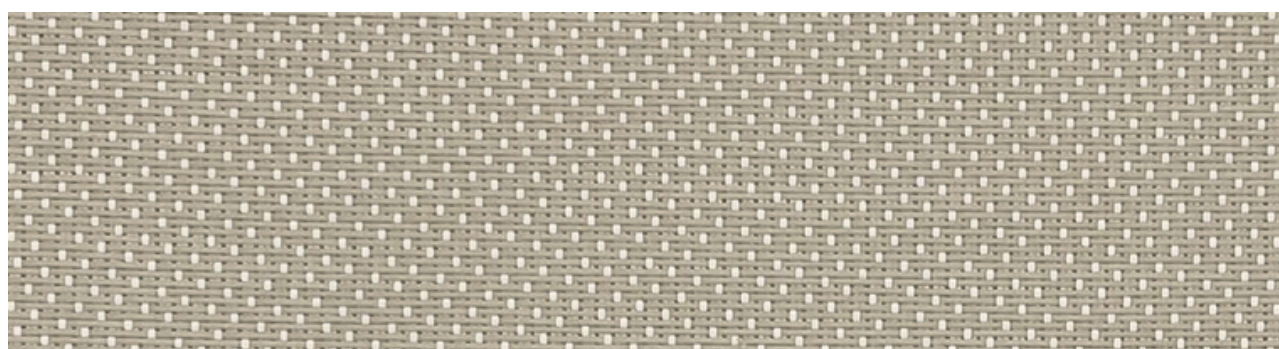
# SCREEN DUAL 3%

ROLLUX

## SCREEN DUAL 3%

Openness Factor	3%
Weave	1 x 2 Construction
Composition	30% Polyester, 70% PVC
Fabric Weight	420 gr / m <sup>2</sup>
Fabric Thickness	(±) 0.60 mm
Breaking Strength (ISO 1421)	>= Warp 1400, >= weft 1300
UV Blockage	Approximately 97%
Color Fastness (ISO 105: B02)	Grade 8 (scale 1 - 8)
Fire Classification	NFPA 701 - 2004 TM#1, California Administrative code, Title 19, BS5867 Part2 Type B
Bacterial & Fungi Resistace	ASTM G21
Lead Free	16 CFR 1303 (USA)

ROLLUX



DUAL 3% BEIGE



DUAL 3% LIGHT GREY



DUAL 3% ASH



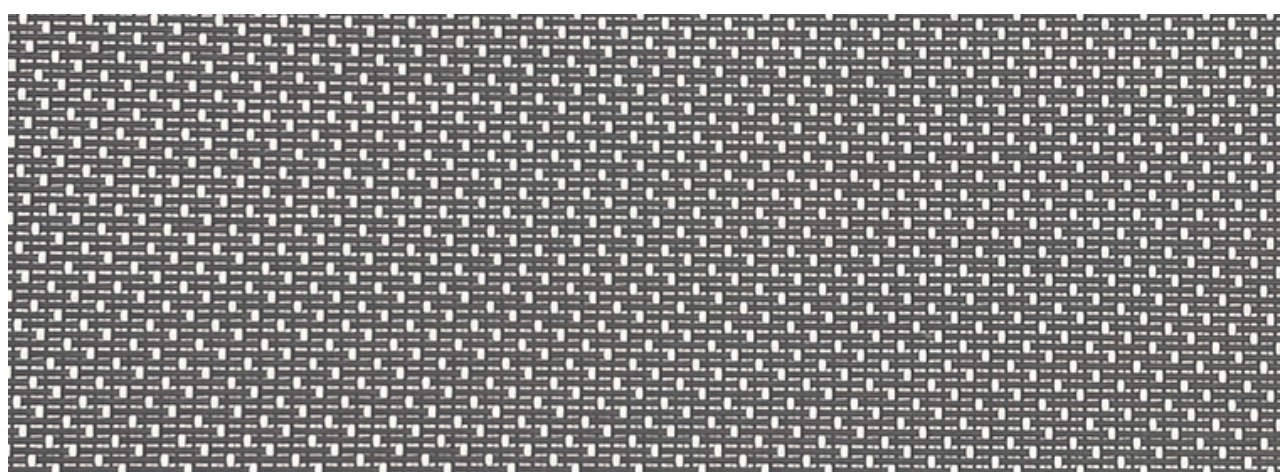
# SCREEN DUAL 5%

ROLLUX

## SCREEN DUAL 5%

Openness Factor	5%
Weave	1 x 2 construction
Composition	30% Polyester, 70% PVC
Fabric Weight	400gr/m <sup>2</sup>
Fabric Thickness	(+/-) 0.58mm
Breaking Strength (ISO 1421)	warp >= 1400, weft >= 1200
UV Blockage	approximately 95%
Color Fastness (ISO 105: B02)	grade 8 (scale 1 - 8)
Fire Classification	NFPA 701-2004 TM#1, California Administrative code, Title 19, BS5867 Part2 Type B
Bacterial & Fungi Resistace	ASTM G21
Lead Free	16 CFR 1303 (USA)

ROLLUX



DUAL 5% LIGHT GREY



DUAL 5% ASH



# ALU SCREEN

ROLLUX

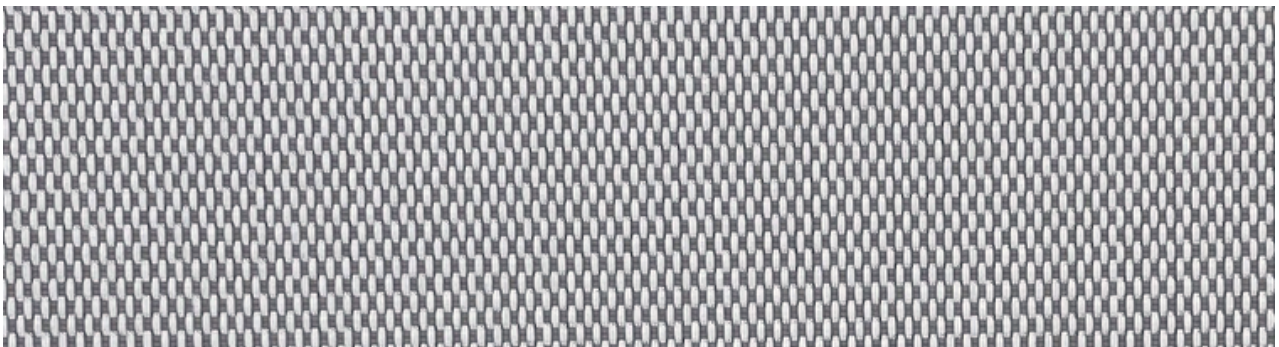
# ALU SCREEN

Openness	3%
Wave	1x2 Construction
Composition	30% Polyester, 70% PVC
Fabric Weight	430 gr / m <sup>2</sup>
Fabric Thickness	(+) 0.62 mm
Breaking Strength (ISO 1421)	Warp >= 1300/Weft >= 1300
UV Blockage	Approximately 97%
Color Fastness (ISO 105.B02)	Grade 8 (scale 1 - 8)
Fire Classification	NFPA 701 - 2004 TM#1, California Administrative Code, Title 19 BS 5867 Part 2 Type B
Bacterial & Fungi Resistance	ASTM G21

ROLLUX



ALU SCREEN WHITE LINEN



ALU SCREEN WHITE PEARL



ALU SCREEN ASH

[www.rollux.cl](http://www.rollux.cl)



**ROLLUX®**